

New Moon  
Theatre Presents

# Shockheaded Peter

a  
Junk  
Opera

created for the stage by  
**Julian Crouch** and  
**Phelim McDermott**

originally conceived and produced by  
**Michael Morris**  
for Cultural Industry, London

directed by  
**Kevin Cochran**

**CDC**  
vaccination card  
or **negative PCR test**  
required for  
admittance

original music and lyrics by *The Tiger Lillies*

**Oct. 29 - Nov. 21, 2021**

*This Production is Sponsored  
by Dorothy Kirsh*



[www.NewMoonTheatre.org](http://www.NewMoonTheatre.org) • 901-484-3467

*Shockheaded Peter will be  
presented on one act, with no intermission.*

*Warning: Strobe lights are used in the production as well as fog machines.*

## CAST

---

<b>Character</b>	<b>Actor</b>
M. C. ....	Andrew Chandler
Singer.....	Ryan Scott
Ensemble.....	Mersadies Burch, Patricia Carreras, Julia Hinson, Franklin Koch, Kate Peckham, Marianne Oren- dorff, Amy Rush, Jen Wood-Bowien

## BAND

---

<b>Musician</b>	<b>Instrument</b>
Eileen Kuo.....	Accordion & Keyboards
Wes Parker, Elijah Poston, Neal Endermann .....	Bass
Jaske Goff.....	Drums

## ARTISTIC / MANAGEMENT STAFF

---

Director.....	Kevin Cochran
Asst. Director.....	Jeff Kirwan
Movement Director.....	Whitney Branan
Musical Director.....	Eileen Kuo
Stage Manager.....	Mystie Watson
Costume Designer.....	Ashley Whitten Kopera
Lighting Designer.....	Melissa Andrews
Set Designers.....	Chris Sterling, Andrew Chandler
Props.....	Bill Short, Andrew Chandler
Dance Captain.....	Kate Peckham
Sound Mixer & Operator.....	Thomas Halfacre
Sound Designer.....	Gene Elliott
Hand Puppets & Mask Design & Construction.....	Aliza Moran
Shadow Puppets Design & Construction.....	Julia Hinson
Sound Engineer.....	Chris Randolph
Poster Graphics.....	Andrew Chandler





## *Shockheaded Peter*

Created for the stage by Julian Crouch  
and Phelim McDermott

Original music and lyrics by  
The Tiger Lillies

Adapted from Heinrich Hoffmann's  
*The Struwwelpeter*

Originally conceived and produced by Michael  
Morris for Cultural Industry, London  
And devised in rehearsal by Julian Bleach, An-  
thony Cairns, Tamzin Griffin, Jo Pocock and  
Graeme Gilmour.

*Shockheaded Peter* was conceived and produced by Michael Morris for Cultural Industry, London. It was developed by Julia Bleach, Tony Cairns, Tamzin Griffin, Jo Pocock and Graeme Gilmour and directed by Julian Crouch and Phelim McDermott in December 1997. The music and lyrics are by Martyn Jacques and The Tiger Lillies.

*This production is  
sponsored by the  
generosity of Dorothy Kirsch!*

*Thank you, Dorothy!*

**FACE MASKS  
REQUIRED**



**THANK YOU!**

# **SHOCKHEADED PETER MUSICAL NUMBERS**

---

The Struwwelpeter Overture

Augustus

Cruel Frederick

Harriet

The Story Of The Man That Went Out  
Shooting

Conrad

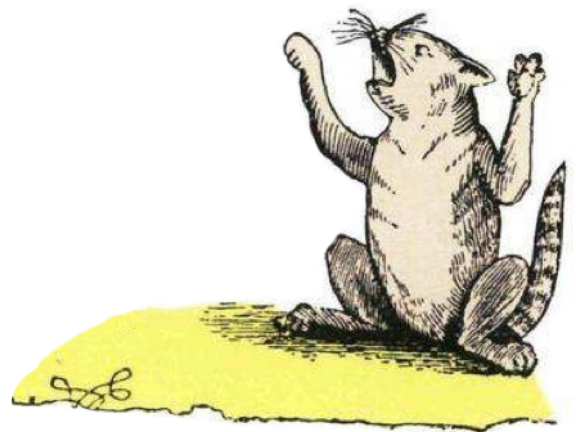
Bully Boys

Fidgety Phil

Johnny Head In Air

Flying Robert

Shockheaded Peter



# ABOUT THE CAST

---



**Mersadies Burch** (*Ensemble*) has appeared with New Moon before. She has appeared in *Pillowman*, *Killer Joe* and *Buried child*. New Moon is thrilled to have Mersadies back again. When Mersadies was 16, she designed puppets for a community theater production of *Pillowman*. That production was staged in the back room of a gay bar in her hometown of Williamsport Pennsylvania.



**Patricia Carreras** (*Ensemble*) a native of Fredonia New York, Patricia Carreras has been working as an Actor, Entertainer, Director, and Theatre Teaching Artist for over 30 years. She is on the Artist in Education Rosters in the Schools for the Mississippi Arts Commission, Arkansas Arts Council, Delta Arts, Greenville Arts Council, Texarkana Regional Arts and Humanities Council, Tennessee Arts Commission, and Nevada Arts Council. She has a Master of Arts in Theatre and Film with emphasis on directing from State University of New York at Buffalo. She is a fulltime Storyteller, Puppeteer, Mime, and Clown. Her many characters --including Chick a dee, Silent Jack, Charlie Chaplin, Gigglin Gertie, and Lil Elvi --- have entertained thousands across the country at Fairs, Festivals and Schools. She recently returned to her Mississippi base from a three-month gig in Alaska with the Training Better Artists Toward a Better America Theatre Company. She is excited to be a part of Shockheaded Peter and her first appearance with New Moon Theatre Group! [www.facebook.com/threepiecesuit](http://www.facebook.com/threepiecesuit)



**Andrew Chandler** (*MC*) is a Memphis-based stay-at-home-dad who occasionally makes time to indulge his creative impulses. He has appeared on stage in such roles as Renfield in the TM production of *Dracula*, and the fourteen characters he adorned in GCT's *Baskerville*. Behind the scenes, Andrew can be found dabbling in poster design, prop making, set building, costume compiling, and makeup applying. He is grateful to his wife Amanda and their four kids for encouraging him to come out to play, and to Kevin, Gene and the rest of the cast and crew for another wild ride at New Moon. [www.andrewchandler.net](http://www.andrewchandler.net)





Entertaining, Educating, Engaging  
and Enriching audiences and  
students across the midsouth

**Tickets only  
\$15-25!**



Dec. 3rd-19th

**ELF JR. THE  
MUSICAL**

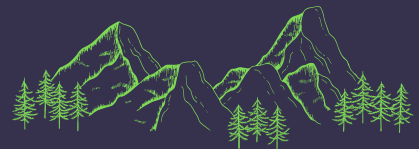
Jan. 14th-30th

**THE  
COMPLETE  
HISTORY OF  
AMERICA  
(ABRIDGED)**



Feb. 25th- Mar. 13th

**BRIGHT STAR**



**Outside  
Mullingar**

Apr. 8th-24th

May 20th- June 5th

**Hundred Days**

901-453-7447

[www.gctcomeplay.org](http://www.gctcomeplay.org)

3037 Forest Hill Irene Rd Germantown, TN 38138

[www.GTComePlay.org](http://www.GTComePlay.org)

# ABOUT THE CAST



**Julia Hinson** (*Ensemble/ Shadow Puppets Design & Construction*) is excited to be back onstage making her New Moon debut in this unique show! Julia was last seen onstage in Cloud 9's production of *Marjorie Prime*. Julia's usual work in theatre is as a director and producer. She produced 2 immersive productions with Lost in Found including *The Parting* and *Rites of Spring* at Ashlar Hall. Some of her favorite directing credits include *Annapurna* with Cloud 9; Eric Hermansson's *Soul* which toured to the Kansas City Fringe and Edinburgh Fringe; *The Skull* which premiered at the Three Branch Festival in London and *Neighborhood 3* which performed at the Sao Paulo Festival in Siauliai, Lithuania. Julia has an MFA from the University of Essex, an MA from the University of Nebraska Omaha and a BFA from the University of Memphis. Julia Hinson works as a teaching artist teaching acting, writing and performance all over the city!



**Franklin Koch** (*Father/Ensemble*) is astonished, bewildered, and elated to be back in the theatre! Although he has performed with New Moon in shows such as *Twelfth Night*, and *The Pillowman*, he has most recently been seen mostly watching reruns of Bob's Burgers in his home, accompanied by his charming and attractive cats. He will next appear in *Our Town* at Theatre Memphis. Thanks to all the cast and crew for finally making this lovely nightmare a reality after two years!



## *Upcoming Productions*

TheatreWorks @ Overton Square

November 26 - 28, 2021

Jeremy Holloway

TBA

TheatreWorks @ The Evergreen Theatre

November 26 - 28, 2021

Total Arts Coalition

TBA

For more information go to [www.TheatreWorksMemphis.org](http://www.TheatreWorksMemphis.org)

# ABOUT THE CAST



**Marianne Orendorff** (*Mother/Ensemble, Understudy for Singer*) Marianne is thrilled to be performing in her second New Moon show after making her debut with them in the *Before Times* (Feb. 2020) as Madeleine Leclerc in *Quills*. She was most recently seen in *Spamalot* as The Lady Of The Lake at the Ruffin Theatre. Favorite roles include Tanya in *Mamma Mia* at the Harrell Theatre, and Beatrice in *Much Ado About Nothing* at Kudzu Playhouse. She would like to thank New Moon for catering to her partiality for the macabre and dying in gruesome ways onstage, and Kevin for recognizing that they were never destined to work together for the first time in a normal show.



**Kate Peckham** (*Ensemble/Dance Captain*) is thrilled to rejoin the stage after a long and lazy pandemic in her first New Moon Production. Kate is no stranger to the stage, having grown up in the Memphis theatre community. After a long hiatus, she returned to performance with the Memphis Rocky Horror Picture Show shadow cast, *Absent Friends*. Kate has also worked with *Lost In Found Productions*, as the Magical Unicorn in *Rites of Spring* and a ghostly tour guide in *The Parting*, and with *FemmeMemphis* and *Lone Tree Live* as Dr. James Barry in *Pants*. Kate would like to thank her parents, Emily and Jim for making her weird and supporting her love of performance.



**Jen Wood-Bowien** (*Ensemble*) is a native Memphian who grew up at Ewing Children's theatre. Over the last 40 years she has found herself on just about every stage in town as either a director or actor. She spends her days running the one person theatre department at Central High School. Thanks to James and Kieran as always and to Kevin for including me in this adventure.

**Special Thanks to Everyone Who Gave Us Amazing Assistance!  
We Couldn't Have Done It Without You!**

**Tim Brown, Ruffin Theatre, Charles McGowan, Bill Townsend, Kevin Collier, Rhodes College, Playhouse on the Square, Neal Endermann, Theatre Memphis, Germantown Community Theatre,  
Leah Getchel w/Good Grocerise Mobile Diner [www.eatgoodgroceries.com](http://www.eatgoodgroceries.com)**



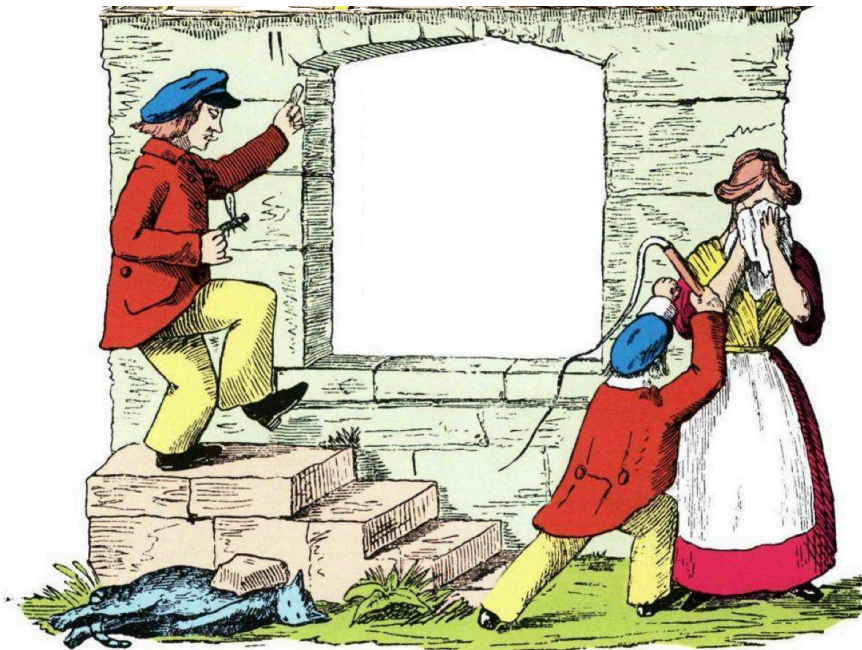
# ABOUT THE CAST



**Amy Rush** (*Ensemble*) is a puppeteer and improviser who recently moved to Memphis from Prague. She studied the performance, directing and building of puppets at University of Connecticut, where she earned an M.A. in Puppet Arts. She has studied with many master puppeteers at several National Puppetry Conferences at the Eugene O'Neill Theater Center. She has performed as a resident puppeteer at the Center for Puppetry Arts, devised with Out of Hand Theater, and was Dewey Dell in Haverty Marionettes' *As I Lay Dying* in Atlanta. In New York, she was a warm-hearted troll in Doppelscope's *Gruff*, told the story of the *Mothman* with The Unitards and was in a CBS Christmas special performed live on tour in Jane Henson's *Nativity Story*. Amy appeared in *The Vagina Monologues*, *The Regina Monologues* and the original play *T.E.A.R.S.* while living in Prague. She has studied and taught improv comedy in Atlanta, New York and Prague and hopes to say "Yes, and ..." to more opportunities here in Memphis!"



**Ryan Scott** (*Singer*) really hates doing bios, but it's a necessary evil when you're a part of the theatre scene. A former narcissist and current recluse, Ryan loves how both his mind and his capacity for understanding and empathy grow by stepping into the shoes of another human being through taking on a role. Although he has never encountered a sea siren or one's son, he has encountered plenty of nasty children and is thrilled to be able to take on a part that demands no empathy whatsoever for them. Ryan is proud to have been nominated once for an Ivey Award (Steve Martin's *The Underpants*) and four times for the Ostrander Award (William Finn's *Eligies*, *The Mystery of Edwin Drood*, *Kimberly Akimbo & Quills*) but is also embarrassed to admit how badly he wants to win one.



**BLACK LODGE**

**Mention you  
were here  
and get a free bag  
of popcorn at your  
next Black Lodge  
event!**

[blacklodgememphis.com](http://blacklodgememphis.com)

# ABOUT THE CREW

**Melissa Andrews** (*Lighting Designer*) is a freelance lighting designer and stage manager and a member of the New Moon Board of Directors. Other New Moon credits include lighting design for *Quills* and *Pillowman*, and stage managing *Agnes of God*.

**Whitney Branan** (*Movement Director*) born in Memphis, she lived in New York for thirteen years where she was the resident tap-coach for the Broadway show *Billy Elliot* and two of its national tours. She has worked across the country (Bally's Casino in Las Vegas) and across the ocean (three "Pick of the Fringe" Award-winning trips to the International Fringe Festival in Edinburgh, Scotland). Whitney was the world-premiere choreographer of *Changing Minds* for Theatrical Rights Worldwide in NYC. She choreographed *The Irish and How They Got That Way* at New York City's Snug Harbor Theatre and Off-Off Broadway at Queens

Theatre in the Park. A favorite director/choreographer credit is crafting four new musical productions aboard the post-Katrina restoration of the American Queen, the largest luxury paddle boat in the world. Whitney also directed and choreographed the live concert Steve Kinworthy's *Lovin' Every Minute*, filmed in Branson, MO. Music video director credits include "Still Beating," "Play Me Again," and "Side of Everything" for songwriter Amy Barkley. Whitney is thrilled to be directing/choreographing *The Music Man* next summer at the Texas Shakespeare Festival where she will also serve as festival choreographer for the 2022

summer season. Memphis/Mississippi Regional director/choreographer credits include *Camelot* (Allie Award for Best Direction); Disney's *Newsies* (Ostrander Award for Best Choreography [Associate], Allie Award for Best Choreography, BroadwayWorld Regional Award for Best Choreography); *Oklahoma!* (Allie Award for Best Choreography); *Madagascar: A Musical Adventure* (Ostrander nomination for Best Choreography); *Head Over Heels* (Ostrander nomination for Best Choreography); *Bye Bye Birdie*; *Junie B Jones: The Musical*; *Joseph and the Amazing Technicolor Dreamcoat* (HSMA nominations for Best Direction and Best Choreography); *The Taming*; *Beauty and the Beast*; *Hello, Dolly!*; *Schoolhouse Rock Live!*; *Hairspray*; *Broadway on Beale*; *Aladdin Jr*; and Disney's *The Lion King Jr*. Proud Member of SAG-AFTRA, AEA, and SDC unions.

website: [WhitneyBranan.com](http://WhitneyBranan.com) Instagram: [WhitneyFBranan](https://www.instagram.com/WhitneyFBranan)



**Please turn off all cellular phones, chiming watches or any other noise creating devices.**

Texting or viewing texts on is not allowed during performance.

No photography or recording devices allowed of ANY kind.

# ABOUT THE CREW

---

**Gene Elliott** (*Sound Design*) has designed the sound for many productions for New Moon such as *Killer Joe*, *Orpheus Descending*, *Buried Child*, *Bug*, *Night Mother*, *Rosencrantz and Guildenstern are Dead*, and *The Maids*. He has also appeared onstage at several theatres in Memphis. For New Moon Theatre he has appeared as J.D. in *The Rainmaker*, in *King Lear* he played Cornwall for which he won an Ostrander Award in Sound Design, and *Trip to Bountiful*. He enjoyed performing in *Six Degrees of Separation* at Theatre Memphis and at BPAC he appeared in *Plaza Suite*. When not performing he can be found at Calming Influence Massage and Bodywork Salon in Midtown. He has been the business owner since 2007.

**Jaske Goff II** (*Drums*) law student by day, and percussionist by night, Jaske has been performing for as long as he could. Jaske graduated from the University of Miami Frost School of Music, his influences are varied and vast, from his hometown Memphis Blues, to his adopted New Orleans Jazz, and Miami latin spice. He strives to bring the culmination all the bits and pieces from his experiences and mix them with his own bombastic persona, creating an experience crowds can't forget.



**G. Thomas Halfacre** (*Sound Board Mixer*) joins New Moon for a second endeavour with the first being *Lizzie - The Rock Musical*. He is positive this will be an equally exciting adventure, with slightly more carnage. He hopes that the resulting therapy sessions will be less of an adventure. With over thirty years of production experience, any mishaps should go unnoticed, or thoroughly enjoyed. It is live theatre after all! Thomas shared an Ostrander nomination with Melissa Andrews, for the lighting design on the *Lizzie* musical. He is humbled that they have allowed him back in the theatre, and absolutely loves working with New Moon! "Thanks everyone for doing anything! Thank you to my girls, Megan and Keighlin, for always suggesting Mexican for dinner."

**Jeff Kirwan** (*Assistant Director*) is deeply honored to be surrounded by this incredibly talented and dedicated cast and crew. Jeff is a familiar face around New Moon Theatre Company, having performed in several previous productions, most recently pulling double duty as Dr. Royer-Collard and Assistant Director on *Quills*. He will also be directing New Moon's next production in the 2021-2022 season, *Art* by Yasmina Reza. Jeff would like to thank Kevin Cochran for his guidance, patience, and boundless creativity. And special thanks to his wife, Kelly and his daughter, Bri for giving him the space and support to do this crazy thing he loves.

# ABOUT THE CREW

---

**Ashley Whitten Kopera** (*Costume Designer*) is a freelance costume designer who has designed for many other theatres around the Mid-South, including Circuit Playhouse, Theatre Memphis, Voices of the South and Desoto Family Theatre, as well as several area schools. She received her BA in Theatre and Art from Mercer University, and studied Costume Design at the University of Memphis. Ashley designed costumes several productions for New Moon including *Quills*, *Agnes of God* and *Twelfth Night*, the latter of which earned her an Ostrander nomination.  
[www.etsy.com/people/foureyedgirl](http://www.etsy.com/people/foureyedgirl)

**Eileen Kuo** (*Musical Director/Accordian & Keyboards*) is thrilled to be a part of this charming, family-friendly romp. Eileen is an attorney and musician, and enjoys performing and music directing in Memphis. Her past credits include music directing *Hissifit*, *I Love You You're Perfect Now Change*, (Rhodes), *Honky Tonk Angels*, *Sweeney Todd*, *Nunsense* (GCT), and *Lizzie* (New Moon), and performing in *Twelfth Night* (New Moon) and most recently, *Motherhood the Musical* (GCT).

**Aliza Moran** (*Hand Puppets & Mask Design & Construction*) has a BFA from the University of Memphis ('04) in Theatre Performance and a M.A in Educational Theatre in Colleges and Communities from NYU ('18). At NYU, she studied abroad in Ireland and the UK studying Theatre for Young Audiences (TYA) and devising processes within foreign communities. Aliza has been an arts educator and community collaborator for 15+ years within the Memphis community. Previously, she worked as the drama teacher and after school site coordinator for Hillcrest High School in Whitehaven, TN. Prior to that she was the Operations Manager for the Department of Outreach and Education at Theatre Memphis. Aliza's work at Theatre Memphis included administrative, curriculum development and facilitation, tour direction and designer for ShoWagon, teaching artist, and performer. Aliza has collaborated with community partners such as Thistle & Bee, The Urban Art Commission, RedZone Ministries, Shelby County Schools, The Grizzlies Foundation TeamUP Mentoring Program, and the University of Memphis. Not only an educator, Aliza is a local performer who has been invested in the arts community since the early 2000s. She

continues to produce and support new theatrical experiences by collaborating with local Memphis artists, educators, community organizations, and creatives. Currently, Aliza is the Director of Les Passees Kids on the Block (an educational puppet troupe).



THOMAS W. BRIGGS FOUNDATION

Join New Moon's  
Mailing List:

[www.NewMoonTheatre.org](http://www.NewMoonTheatre.org)

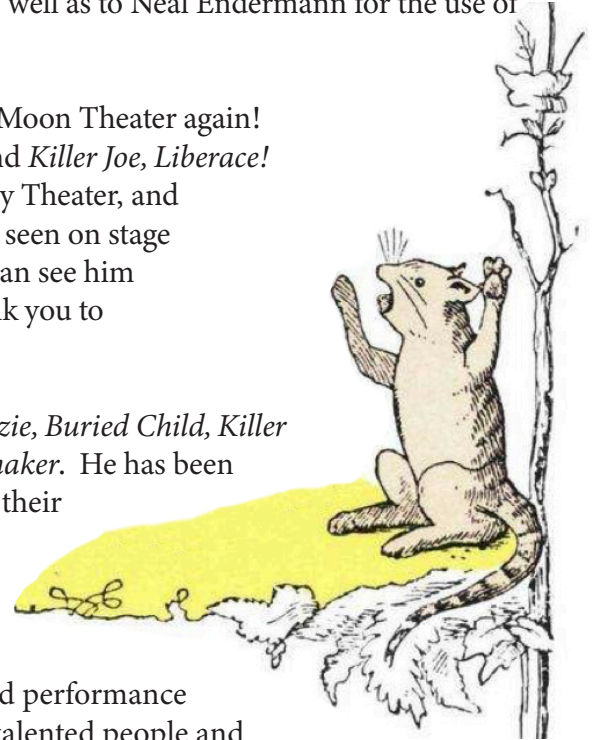
# ABOUT THE CREW

**Wes Parker** (*Bass*) is a guitarist/composer from Athens, GA, and is thrilled to be returning to live theatre with New Moon's production of *Shockheaded Peter*! A 2018 Rhodes College music graduate, Wes's previous orchestra credits include productions of *HMS Pinafore* with Opera Memphis, *Jesus Christ Superstar* with the Harrell Theatre, *Heathers* with the McCoy Theatre, *Godspell* with Arkansas State University, and both *Sister Act* and *Shrek* with Germantown High School. Wes would like to send his sincerest thanks to Chris Sterling and Eileen Kuo for the chance to return once more to the theatrical stage he loves so dearly, as well as to Neal Endermann for the use of his upright bass.

**Chris Randolph** (*Sound Engineer*) is excited to be working with New Moon Theater again! Previous tech credits include New Moon's *Pillowman*, *Buried Child*, and *Killer Joe, Liberace!* with Theater Memphis, *Love's Labours Lost* with Arlington Community Theater, and *JustLarry's Mayhem!* and Theater Bizarre shows. Most recently, he was seen on stage at the Ruffin Theater in Covington, TN for *Spamalot!* As always, you can see him doing the Timewarp again with *Absent Friends* at the Evergreen. Thank you to everyone who supports the return of live theater to Memphis!

**Chris Sterling** (*Set Designer*) has designed the sets for *Pillowman*, *Lizzie*, *Buried Child*, *Killer Joe*, *Haint* (Ostrander winner for Best Set Design), *Bug* and *The Rainmaker*. He has been seen on several local stages over the years, and for NM he appeared in their production of *The Rainmaker*. He has also appeared in *Secret Garden*, *Newsies* and *The Importance of Being Earnest* at Theatre Memphis; *The Hollow* and *The Mousetrap* at GCT.

**Mystie Watson** (*Stage Manager*) has a BFA in Theatre Production and performance from U.T. Knoxville. She has had the privilege of working with some talented people and doing several exciting productions throughout the years, on and behind the stage. In the Memphis area, she can semi-frequently be found in the halls of Evergreen Theater, Theatreworks and Theater Memphis for different projects. Whether she is acting, directing, stage managing, or even creating costumes, she has truly loved being a part of each and every show. "...no day but today!"



## New Moon Theatre Company Board of Directors

Melissa Andrews

Gregory Boller

Gene Elliott

June Hurt

Jeff Kirwan

Amy Van Doren Rust

Chris Sterling

Mystie Watson

## New Moon Theatre's 2021 - 2022 Season

**Oct. 29 - Nov. 28, 2021**

*Shockheaded Peter*  
created for the stage by  
Julian Crouch  
& Phelim McDermott  
Directed by Kevin Cochran

**February 11 - 27, 2022**

*Art*, by Yasmina Reza  
Directed by Jeff Kirwan

**May 13 -29, 2022**

*The Moors*, by Jen Silverman  
Directed by John Smiley

For more info please visit  
[www.NewMoonTheatre.org](http://www.NewMoonTheatre.org)

Theatreworks would like to thank the following arts organizations that offer assistance through grants and arts programs.

**ArtsMemphis**  
Powering Authentic Assets.



THOMAS W. BRIGGS FOUNDATION



THE MARSTON GROUP, PLC  
CERTIFIED PUBLIC ACCOUNTANTS & ADVISORS

**the art**  
heartoftheartsmemphis

**TENNESSEE  
ARTS  
COMMISSION**  
Cultivate. Create. Participate.

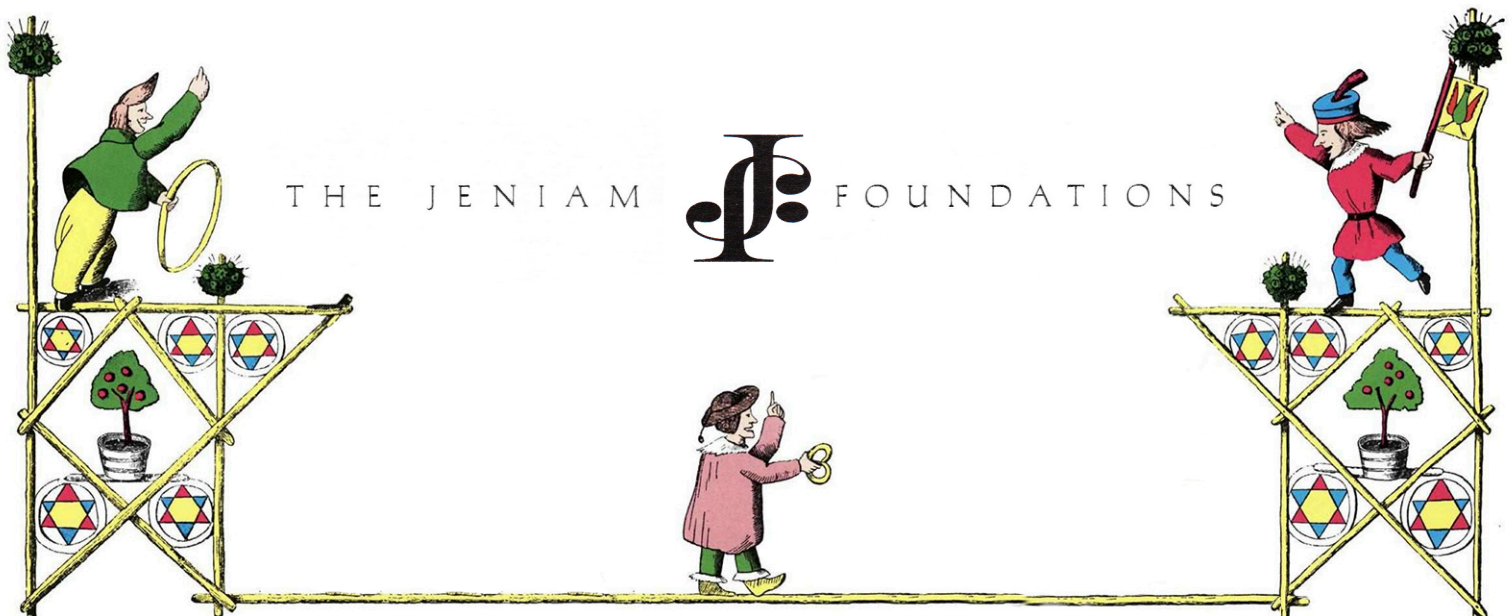
# DIRECTOR'S CORNER

---



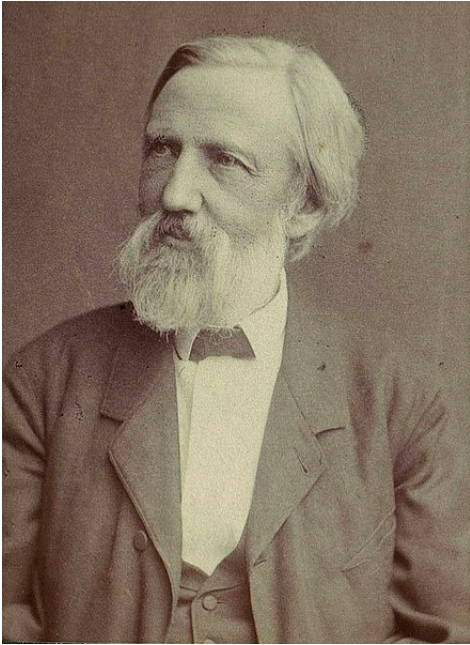
**James Kevin Cochran** (*Director*) would like to welcome you back to New Moon! This is Kevin's third production at New Moon, previously directing *Killer Joe* and *The Pillowman*. Other directing credits include *Barefoot in the Park*, *Fools*, and *The Mousetrap* at Germantown Community Theatre, *To Kill a Mockingbird* at Theatre Memphis, and self-produced productions *Far Away*, *Cock*, and *Gruesome Playground Injuries*. He would like to thank his team on this production for being the best team of collaborators to get back into the theatre game after two years away. His work on this production is dedicated to his friends and family, both here and departed.  
jkevincochran.com

***Some Thoughts From Our Director:*** “*Shockheaded Peter* is the theatrical presentation of the 1845 German children’s book, *Der Struwwelpeter* by Dr. Heinrich Hoffman. Dr. Hoffman wrote these stories as a Christmas present for his 3-year-old son, as there were not many children’s books available at the time, as children were typically given instruction manuals or textbooks for their entertainment. Little did Dr. Hoffman know, but his stories would resonate through pop culture for decades to come, inspiring stories such as Looney Tunes’ Bugs Bunny and Elmer Fudd, and Tim Burton’s *Edward Scissorhands*. Throughout time, *Der Struwwelpeter* was translated to over 35 different languages, and would also inspire spin-offs such as *Tricky Dick* (about Richard Nixon) and *Struwwelhitler* (distributed amongst the Allies during WWII, and later the musical you see before you today, *Shockheaded Peter*, with music by The Tiger Lillies, the forefathers of Brechtian punk cabaret. *Shockhead Peter* premiered off-Broadway in 1998, and quickly established a cult following, and spawned productions around the world. With only a 19-page script, mostly everything you see before you was devised by the cast and artistic staff.”



# AUTHOR OF ORIGINAL PIECE

---



**Heinrich Hoffmann** wrote *Struwwelpeter* (Shockheaded Peter) in reaction to the lack of good books for children. Intending to buy a picture book as a Christmas present for his three-year-old son, Hoffmann instead wrote and illustrated his own book. In 1845 he was persuaded by friends to publish the book anonymously as *Lustige Geschichten und drollige Bilder mit 15 schön kolorierten Tafeln für Kinder von 3–6 Jahren* ("Funny Stories And Whimsical Pictures With 15 Beautifully Colored Panels For Children Aged 3–6"). The book was one of the first uses of chromolithography (a method of making multi-colored prints) in a children's book.

For the third edition, published in 1858, the title was changed to *Struwwelpeter*, the name of the character in the first story. The book became popular among children throughout Europe.

*Struwwelpeter* has been translated into several languages. In

1891 Mark Twain wrote his own translation of the book, but because of copyright issues Twain's "Slovenly Peter" was not published until 1935, 25 years after his death.

British twin illustrators Janet and Anne Grahame Johnstone provided new illustrations for an English translation published in 1950.

